

Your Forest School Practitioners are:



Karen



Liz



Marsden Park Forest School
Marsden Old Hall
Walton Lane
Nelson
BB9 8BW

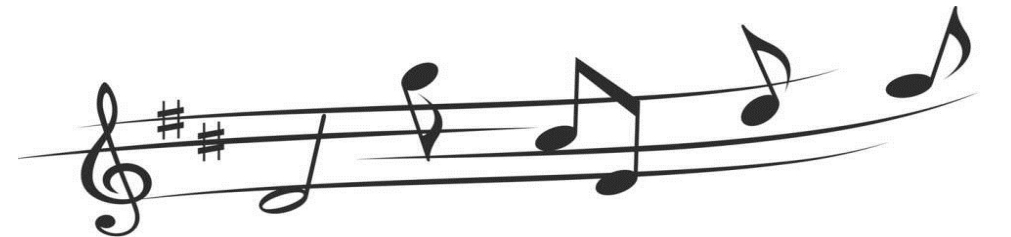
Tel: 01282 613437

In collaboration with:

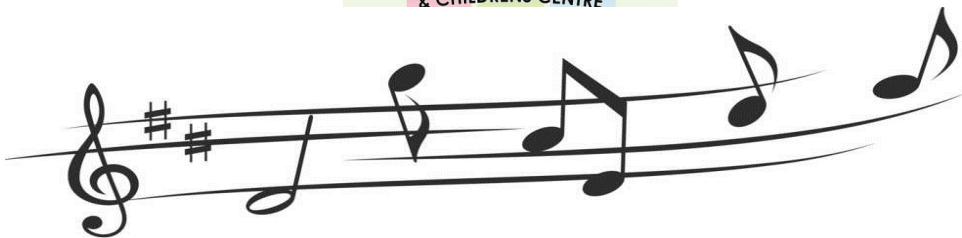


and

MUSIC



Marsden Park Forest School



Group A

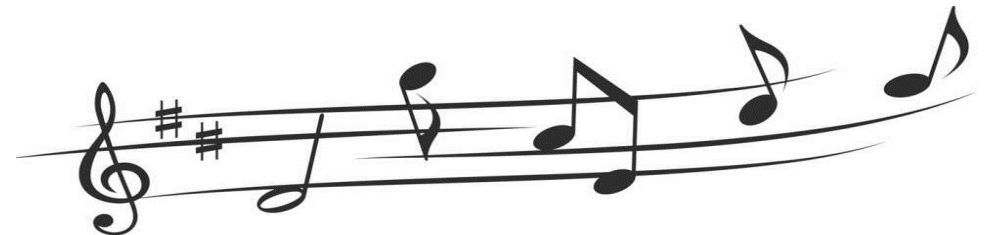
Time	Activity
9.15am	Start of day—Split in to Group A & Group B
9.15am - 9.30am	Debrief : -Housekeeping in the meeting area -Happy bag -Medicines -Mobile phones -Toilet facilities
9.30am - 9.45am	'Suited and Booted'
9.45am -10.30am	Welcome game 1,2,3 Where are You? Alien game Zip-Zap-Boing Little Red Riding Hood
10.30am-10.45am	Snack
10.45am–11.30am	Music Smarts
11.30am-12.00pm	Back to base - Outdoor clothing off, resources cleared away and tools cleaned etc
12.00pm-12.30pm	Lunch
12.30pm-12.45pm	Debrief (as before)
12.45pm-1.00pm	'Suited and Booted'
1.00pm - 1.45pm	Making musical instruments
1.45pm -2.00pm	Snack
2.00pm -2.45pm	Re-enacting Stories: -Teddy bears picnic -Three little pigs -Bear hunt -The Gruffalo -Stick man -Not a stick
2.45pm -3.00pm	Review of the day.
3.00pm	End of day. Back to base.

The role of the Teachers/ Practitioners in supporting the forest school leaders

- 1) Ensuring all paperwork has been completed prior to the session
- 2) Supervising the children and ensuring child : adult ratios are adhered to at all times (please note Forest School Leaders are not counted in ratios)
- 3) To be fully involved and motivated in the Forest School activities, sometimes leading an activity under the guidance of the Forest School Leaders
- 4) To have a positive attitude and be a good role model
- 5) To manage any behavioural issues
- 6) To be aware of your own and the children's health and safety

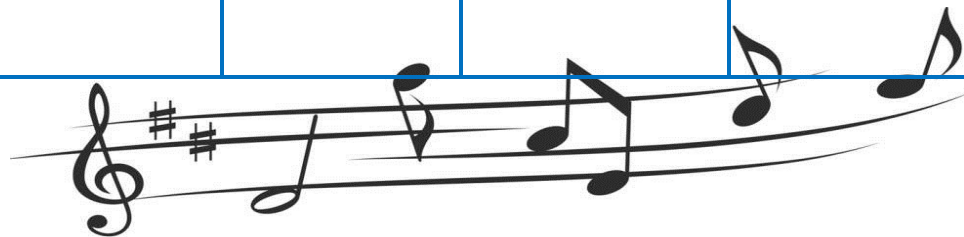
To advise the Forest School Leaders of:

- 1) Any children's health needs and allergies
- 2) Any accidents that happen during the session



Group B

Activity	Forest School links	Early Years Foundation stage	National Curriculum
<p>Music Smarts and making and playing musical instruments</p>	<p>To discuss favourite sounds and try to imitate nature sounds with home-made instruments</p> <p>Noticing non-verbal sounds within the environment</p>	<p>Communication and Language-Speaking</p> <p>Personal, Social and Emotional Development-Self-confidence and self-awareness</p> <p>Expressive Arts and Design- Exploring and using media and materials</p>	<p>Personal, Social and Health Education-Developing confidence and responsibility and making the most of their abilities</p> <p>Art and Design-Exploring and developing ideas</p> <p>Art and Design- Investigating and making art, craft and design</p>
<p>Re-enacting stories</p>	<p>Use imagination to recreate stories</p> <p>Using the natural environment and natural materials as props and support play</p>	<p>Communication and Language-Speaking</p> <p>Personal, Social and Emotional Development-Making relationships</p> <p>Expressive Arts and Design - Being imaginative</p>	<p>Art and Design- Exploring and developing ideas</p> <p>Personal, Social and Health Education-Developing confidence and responsibility and making the most of their abilities</p>



Time	Activity
9.15am	Start of Day—Split in to Group A & Group B
9.15am - 9.30am	'Suited and Booted'
9.30am - 9.45am	Debrief : -Housekeeping in the meeting area -Happy bag -Medicines -Mobile phones -Toilet facilities
9.45am -10.30am	Music Smarts
10.30am-10.45am	Snack
10.45am–11.30am	Welcome Game 1,2,3 Where are You? Alien Game Zip-Zap-Boing Little Red Riding Hood
11.30am-12.00pm	Back to base - Outdoor clothing off, resources cleared away and tools cleaned etc.
12.00pm-12.30pm	Lunch
12.30pm-12.45pm	'Suited and Booted'
12.45pm-1.00pm	Debrief (as before)
1.00pm - 1.45pm	Re-enacting Stories: -Teddy bears picnic -Three little pigs -Bear hunt -The Gruffalo -Stick man -Not a stick
1.45pm -2.00pm	Snack
2.00pm -2.45pm	Making musical instruments
2.45pm -3.00pm	Review of the day.
3.00pm	End of Day. Back to base.

Activity	Forest School links	Early Years Foundation stage	National Curriculum
1, 2, 3, Where are You?	Encouraging children to be able to define boundaries within their working area, and to become familiar with 'our space' to learn how to be safe in the woods	Personal, Social and Emotional Development - Managing feelings and behaviour Communication and Language - Listening and attention Physical Development - Health and self-care	Personal, Social and Health Education - Preparing to play an active role as a citizen Physical Education - Selecting and applying skills, tactics and compositional ideas

Activity	Forest School links	Early Years Foundation stage	National Curriculum
Alien Games and Zip-Zap Boing	To learn about the sounds noises we make To discuss favourite sounds and try to imitate nature sounds	Communication and Language - Speaking Personal, Social and Emotional Development - Making relationships Personal, Social and Emotional Development - Self-confidence and self-awareness	Personal, Social and Health Education - Developing confidence and responsibility and making the most of their abilities Physical Education - Selecting and applying skills, tactics and compositional ideas

