

Your Forest School Practitioners are:



Karen



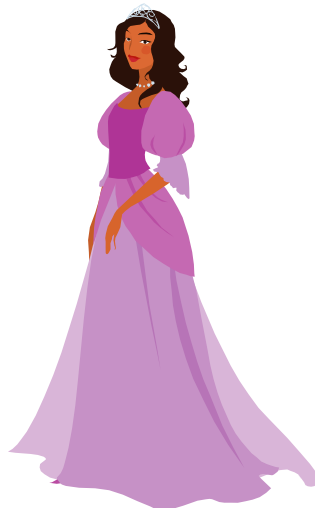
Liz



Marsden Park Forest School
Marsden Old Hall
Walton Lane
Nelson
BB9 8BW

Tel: 01282 613437

In collaboration with:



Pirates & Princesses



Marsden Park Forest School

Group A

Time	Activity
9.15am	Start of day—Split in to Group A & Group B
9.15am - 9.30am	Debrief : -Housekeeping in the meeting area -Happy bag -Medicines -Mobile phones -Toilet facilities
9.30am - 9.45am	'Suited and Booted'
9.45am -10.30am	Creative Activities: -Making crowns -Making pirate headgear -Making jewellery -Making telescopes, Eye-Patches and Maps
10.30am-10.45am	Snack
10.45am-11.30am	Woodland treasure hunt Flags - Bash, bash pictures
11.30am-12.00pm	Back to base - Outdoor clothing off, resources cleaned away and tools cleaned etc.
12.00pm-12.30pm	Lunch
12.30pm-12.45pm	Debrief (as before)
12.45pm-1.00pm	'Suited and Booted'
1.00pm - 1.45pm	1,2,3 Where are you? Drum stalker Making treasure
1.45pm -2.00pm	Snack
2.00pm -2.45pm	Not a stick activity: -Swords -Hobby horses -Peg-legs -Wands & crowns
2.45pm -3.00pm	Review of the day.
3.00pm	End of day. Back to base.

The role of the Teachers / Practitioners in supporting the Forest School Leaders

- 1) Ensuring all paperwork has been completed prior to the session
- 2) Supervising the children and ensuring child : adult ratios are adhered to at all times (please note Forest School Leaders are not counted in ratios)
- 3) To be fully involved and motivated in the Forest School activities, sometimes leading an activity under the guidance of the Forest School Leaders
- 4) To have a positive attitude and be a good role model
- 5) To manage any behavioural issues
- 6) To be aware of your own and the children's health and safety

To advise the Forest School Leaders of:

- 1) Any children's health needs and allergies
- 2) Any accidents that happen during the session



Activity	Forest School Links	Early Years Foundation Stage	National Curriculum
Drum stalker	Developing listening skills and listening to environmental sounds promoting close observation and concentration Promoting trust and honesty	Communication and Language—Speaking Personal, Social and Emotional Development—Making relationships Expressive Arts and Design—Exploring and using media and materials Expressive Arts and Design—Being imaginative	Art and Design—Exploring and developing ideas Personal, Social and Health Education—Developing confidence and responsibility and making the most of their abilities Music—Listen with concentration and recall sounds




Group B


Time	Activity
9.15am	Start of day—Split in to Group A & Group B
9.15am - 9.30am	'Suited and Booted'
9.30am - 9.45am	Debrief : -Housekeeping in the meeting area -Happy bag -Medicines -Mobile phones -Toilet facilities
9.45am -10.30am	Woodland treasure hunt Flags - Bash, bash pictures
10.30am-10.45am	Snack
10.45am-11.30am	Creative Activities: -Making crowns -Making pirate headgear -Making jewellery -Making telescopes, Eye-patches and Maps
11.30am-12.00pm	Back to base - Outdoor clothing off, resources cleaned away and tools cleaned etc.
12.00pm-12.30pm	Lunch
12.30pm-12.45pm	'Suited and Booted'
12.45pm-1.00pm	Debrief (as before)
1.00pm - 1.45pm	Not a stick activity: -Swords -Hobby horses -Peg-legs -Wands & crowns
1.45pm -2.00pm	Snack
2.00pm -2.45pm	1,2,3 Where are you? Drum stalker Making treasure
2.45pm -3.00pm	Review of the day.
3.00pm	End of day. Back to base.

Activity	Forest School Links	Early Years Foundation Stage	National Curriculum
1, 2, 3, Where are you?	Encouraging children to be able to define boundaries within their working area, and to become familiar with 'our space' To learn how to be safe in the woods	Personal, Social and Emotional Development—managing feelings and behaviour Communication and Language—Listening and attention Physical Development—Health and self-care	Personal, Social and Health Education—Preparing to play an active role as a citizen Physical Education—Selecting and applying skills, tactics and compositional ideas

<i>Activity</i>	<i>Forest School Links</i>	<i>Early Years Foundation Stage</i>	<i>National Curriculum</i>
Creative activities—Swords, Hobby horses, Peg legs, Wands and Crowns	To explore natural materials using their sense of touch Exploring different kinds of textures To use natural materials to create own art work	Personal, Social and Emotional Development—Self-confidence and self-awareness Expressive Arts and Design—Exploring and using media and materials Understanding the world—The World	Science— Grouping and classifying materials Art and Design— Investigating and making art, craft and design

